

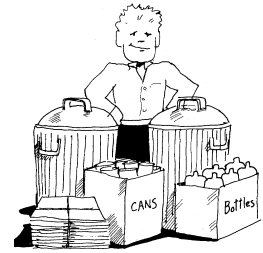


School  
Recycling  
CLUB

c/o Northeast Resource Recovery Association  
2101 Dover Road (NH Rt 4), Epsom, NH 03234  
Phone:(603) 736-4401 Fax:(603) 736-4402  
E-Mail:theclub@nrra.net Web:www.nrra.net

# SCHOOL RECYCLING COLLECTION CONTAINERS

MAY 2007

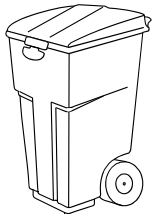


An often over looked factor in the success of a school recycling program is highly visible, easy to use, well marked collection containers. This bulletin has been prepared by the School Recycling Club (THE CLUB) as a reference for schools that need to obtain collection containers for their recycling program.

## WHAT KIND OF CONTAINERS?

### ⊕ Classroom/Office Collection Containers

Serve to collect recyclables throughout the school. Typically corrugated boxes, manufactured curbside bins, or reusable bags.



### ⊕ Centralized Collection Toters/Cafeteria Bins

Serve as the aggregation point for the recyclables collected within the school. Typically 96 gallon toters, with lids or gaylord boxes.

## HOW MANY CONTAINERS?

### ⊕ What Materials Will Be Collected?

The recyclables collected will dictate how and what kind of collection containers are needed. For example, if the school collects paper and aluminum cans, you will need paper collection containers for each classroom and office, as well as a few trash barrels with lids with holes for aluminum cans.

### ⊕ Will the Materials Be Sorted or Mixed?

If the recyclables are collected mixed in one bin then fewer bins will be needed, but if the school's program separates (i.e., white and colored paper, aluminum cans, plastic bottles), two bins or a bin with a divider will be needed.

### ⊕ Number of Classrooms and Offices?

A basic rule of thumb is one collection container for paper in each classroom or office, as well as the necessary beverage containers for the cafeteria and/or halls.

### ⊕ How Often Will Materials Be Collected?

The size of the collection containers should be directly related to how often they will be emptied. The more often the containers are emptied, the smaller the containers can be and vice versa.

## WHERE ARE THE FUNDS?

Most schools face an uphill battle when trying to add a new line item to the budget, but this shouldn't stop a school from adopting a school recycling program. There are alternatives!

⊕ Use the revenue from recycling aluminum cans or inkjet cartridges to purchase collection containers. (contact THE CLUB for more information).

⊕ Ask a local construction company or hardware store to donate five gallon buckets (i.e., from sheetrock mud). These buckets are easy to carry, large enough to post the "DO's" and "DON'TS" of the program, and they're FREE!

⊕ Use cardboard boxes. They are easy for the students to carry and readily available. (Please check with the Fire Marshall before using cardboard boxes within the school.)

- ⊕ Contact local businesses (such as restaurants or donut shops) to see if they have any storage containers. For example, some restaurants receive food in plastic containers which can be washed and reused as paper collection containers for individual classrooms.
- ⊕ Contact the local Chamber of Commerce, Lions Club, businesses, or PTA about them helping the school purchase containers.

## CLUB EXCLUSIVE GRANT

THE CLUB has received funding from New Hampshire the Beautiful and the New Hampshire Soft Drink Association to promote school recycling by offering New Hampshire CLUB members the opportunity to purchase the following recycling bins at a drastically reduced rate:



- ⊕ **Clear Stream Recycling Bins** -- The strong wire frame, see through bag, bold graphics and raised 3-hole lid dramatically increase recycling participation and reduce the chance of contamination. The Clear Stream Bin is available to New Hampshire members of THE CLUB for only \$16 and can be used to collect any type of container, such as aluminum cans or plastic bottles.
- ⊕ **Classroom Recycling Bins** -- This dark green bin (16" wide x 22" long x 13" high) is available for only \$3.00 each! The bin comes printed with the New Hampshire the Beautiful logo.

Contact THE CLUB at 736-4401 (or e-mail [theclub@nrra.net](mailto:theclub@nrra.net)) for more information.

## WHAT A GREAT EDUCATIONAL OPPORTUNITY!

Deciding where recycling collection containers are placed can provide a great opportunity for students to develop real life skills, including:

- ⊕ Surveying each classroom and office for the approximate number and type of collection containers needed;
- ⊕ Soliciting donations from local companies or organizations for containers or monies to purchase collection containers;
- ⊕ Drawing scaled floor plans for the placement of each bin within the school; and
- ⊕ Educating the students, faculty, etc., of where the bins are and what materials can be recycled.

## WHO SELLS CONTAINERS?

Here are key questions you may want to ask collection bin salespeople:

- ⊕ What is the container's capacity?
- ⊕ Do you offer custom printing for the school's logo?
- ⊕ Do you require a minimum order? Do you offer a discount for bulk orders?
- ⊕ Are the containers made of virgin or recycled materials?
- ⊕ Is there a shipping cost?
- ⊕ Please give the names of two or three towns, businesses, or schools that are currently using your product.

THE CLUB is a project of the Northeast Resource Recovery Association (NRRRA), a proactive, non-profit working to make recycling programs strong, efficient and financially successful.

## TOTER/CONTAINER COMPANIES

The companies listed provide recycling bins in various sizes. For more specific information, please contact each company directly. Also, don't forget to visit your local office supply store for office recycling containers.

Company Information and Telephone Number	Type of Collection Container
Ameri-Kart Corporation 433 Industrial Road Goddard, KS 67052-7008 Contact: Customer Service Representative, (800) 533-2475 Website: <a href="http://www.amerikart.com">www.amerikart.com</a>	<ul style="list-style-type: none"> <li>• 35, 60, and 90 gallon toters</li> </ul>
Bruce Mooney Associates, Inc. 1849 Fairhill Road Allison Park, PA 15101-3327 Contact: Salesperson, (800) 454-2686 Website: <a href="http://www.brucemooney.com">www.brucemooney.com</a>	<ul style="list-style-type: none"> <li>• Deskside bins &amp; trays</li> <li>• Beverage collection container</li> </ul>
Granite State Resource Group 189 Mill Road North Hampton, NH 03862-2128 Contact: Wendy L. Cahill, (603) 964-4774 E-mail: <a href="mailto:gsrpwpc@aol.com">gsrpwpc@aol.com</a>	<ul style="list-style-type: none"> <li>• Reuseable bag with stand or wall hook</li> </ul>
Land Reclamation, Inc. 84 Warren Avenue Westbrook, ME 04092-4433 Contact: Salesperson, (207) 854-4215 Website: <a href="http://www.landrec.com">www.landrec.com</a>	<ul style="list-style-type: none"> <li>• 14 &amp; 18 gallon curbside bin</li> <li>• 5 gallon desk side container</li> </ul>
NH School Recycling Club % Northeast Resource Recovery Association 2101 Dover Rd Epsom, NH 03234 Contact: Helga Mispelblom 603-736-4401 Website: <a href="http://www.nrra.net">www.nrra.net</a> click on School Recycling	<ul style="list-style-type: none"> <li>• 14 gallon classroom bins</li> <li>• Clear Stream recycling bins</li> </ul>
Rehrig Pacific 13 Center Street Raymond, NH 03077-2537 Contact: Peter LaRoche, (800) 882-7440 Website: <a href="http://www.rehrigpacific.com">www.rehrigpacific.com</a>	<ul style="list-style-type: none"> <li>• Deskside bins &amp; trays</li> <li>• 14 &amp; 18 gallon curbside bins</li> <li>• 20, 35, 65, and 95 gallon toters</li> </ul>
Signature Marketing 134 West Street Simsbury, CT 06070-2457 Contact: Salesperson, (860) 658-7172 Website: <a href="http://www.signaturesmarketing.com">www.signaturesmarketing.com</a>	<ul style="list-style-type: none"> <li>• 6 gallon curbside bin</li> <li>• 14 gallon curbside bin</li> <li>• 30 gallon collection container</li> <li>• Minimum purchase of \$250</li> </ul>
TECHSTAR Plastics, Inc. 15400 Old Simcoe Road Port Perry, ON L9L 1L8 CANADA Contact: Salesperson, (800) 263-7943 Website: <a href="http://www.techstarplastics.com">www.techstarplastics.com</a>	<ul style="list-style-type: none"> <li>• 16-45 gallon containers</li> </ul>

The information contained in this bulletin is believed to be reliable and is neither comprehensive nor an endorsement of any of the companies listed. We welcome additions.